



Sustainable transport

The Western Balkans economies have prioritised connectivity with the Trans-European Transport Network, alignment with EU reforms and technical standards, and the promotion of multimodal transport solutions in their transport sector development. Investments in sustainable transport modes drive national and regional economic growth, strengthen competitiveness, improve mobility, and deliver greater user benefits while fostering regional cooperation and integration with the EU.

€2.9 bn
WBIF contribution to investments

€9.7 bn
Total investments value

Expected impacts



215 km of motorways built

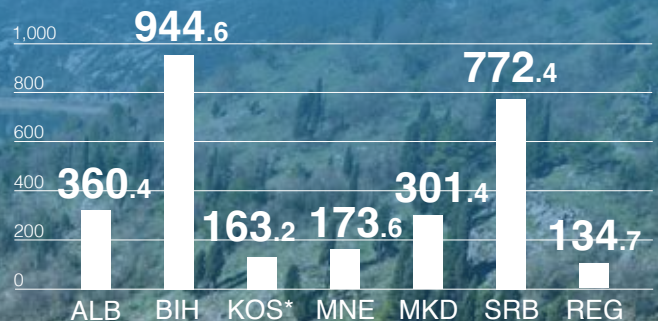


896 km of railway lines rehabilitated



45 km of waterways upgraded

WBIF contribution per beneficiary (€m)



* This designation is without prejudice to positions on status, and is in line with UNSCR 1244/1999 and the ICJ Opinion on the Kosovo declaration of independence.



Highlighted projects



European Bank
for Reconstruction and Development

Bosnia and Herzegovina
**Rhine/Danube Corridor:
Brčko Port**

WBIF contribution to investment	€3.1 m
Total investment value	€11.1 m
Expected completion	2025

This project is the first phase of a comprehensive rehabilitation programme for Brčko Port on the Sava River. It includes the construction of 2.5 km of new harbour track, the refurbishment of 4.5 km of industrial railway track connecting to the Brčko Novo station, renovation of the port plateau, rehabilitation of the access road, and installation of a new 16-ton capacity port crane.



European Bank
for Reconstruction and Development

European Investment Bank | Global

Kosovo
**Route 10: Fushë Kosovë/
Kosovo Polje – Border with
North Macedonia Railway
Section (Phase 1)**

WBIF contribution to investment	€43.1 m
Total investment value	€105.4 m
Expected completion	2025

Rail Route 10 is Kosovo's primary rail connection to Serbia and North Macedonia. This project upgrades the section between Fushë Kosovë/Kosovo Polje and the North Macedonian border, enhancing safety along the route, supporting economic growth, facilitating cross-border trade, promoting regional integration, and encouraging the shift from road to rail transport.



THE WORLD BANK
IBRD · IDA | WORLD BANK GROUP

North Macedonia
**Kriva Palanka - Stracin
Express Road Section**

WBIF contribution to investment	€14 m
Total investment value	€36.7 m
Completed	2025

A key route for North Macedonia's connectivity with the region and the EU, the 23 km express road from Kriva Palanka to Stracin is the final link to the Bulgarian border. The road cuts travel time between Skopje and Sofia, improves safety, and supports regional trade and development.



European Bank
for Reconstruction and Development

Albania
**Electrification of the
Durrës– Tirana Railway Line**

WBIF contribution to investment	€9.6 m
Total investment value	€41.8 m
Expected completion	2027

This investment electrifies the 42.1 km Durrës–Tirana– Airport rail link, replacing diesel traction with a 120 km/h electric system, cutting CO₂ emissions by 16,000 t/a. By upgrading to EU standards and integrating modern SCADA controls, the initiative reduces operating costs and travel times, fostering sustainable economic development between Albania's largest urban and transport hubs.